



Bulletin 700-HP (PCB) "Pin Style" Relay

- 8 A Contact Ratings
- DPDT/ (2 c/o) Contacts
- Plug-in PIN Style (PCB) Terminals (5 mm Pinning)
- Choice of Standard Silver Nickel Contacts, or Silver with Gold Plated Contacts
- Options: None

Table Of Contents

Product Selection 107
 Accessories 108
 Specifications 109
 Approximate Dimensions 110

Slim Line Relay with Plug-in Quick Connect Terminations



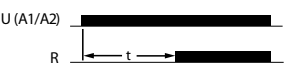
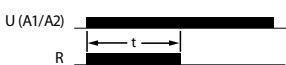




Bulletin 700-HP DPDT

Description	Contact Rating	Wiring Diagrams		Coil Voltage	Cat. No.	Factory-stocked Item
		U.S./Canada	International			
SPDT 2-Pole 2 Form C AgNi + Au Gold Plated Contacts	8 A	<p>700-HN123</p>	<p>700-HN123</p>	6V AC	700-HPX2A06	
				12V AC	700-HPX2A12	✓
				24V AC	700-HPX2A24	✓
				120V AC	700-HPX2A1	✓
				240V AC	700-HPX2A2	✓
				6V DC	700-HPX2Z06	
				12V DC	700-HPX2Z12	✓
				24V DC	700-HPX2Z24	✓
				48V DC	700-HPX2Z48	
				110V DC	700-HPX2Z1	
DPDT 2-Pole 2 Form C AgNi Contacts	8 A	<p>700-HN123</p>	<p>700-HN123</p>	6V AC	700-HP32A06	
				12V AC	700-HP32A12	
				24V AC	700-HP32A24	✓
				120V AC	700-HP32A1	✓
				240V AC	700-HP32A2	✓
				6V DC	700-HP32Z06	✓
				12V DC	700-HP32Z12	✓
				24V DC	700-HP32Z24	✓
				48V DC	700-HP32Z48	
				110V DC	700-HP32Z1	

Bulletin 700-HP
Interposing/Isolation Relays

Accessories

	Description	Pkg. Qty.	Cat. No.	Factory-stocked Item
	Diode with LED Surge Suppressor Voltage Range: 6...24V DC used with 700-HN123 socket	10	700-ADL1R	✓
	Diode with LED Surge Suppressor Voltage Range: 28...60V DC used with 700-HN123 socket	10	700-ADL2R	✓
	Diode with LED Surge Suppressor Voltage Range: 110...220V DC used with 700-HN123 socket	10	700-ADL3R	✓
	Varistor with LED Surge Suppressor Used with 700-HN153 Socket Voltage Range: 6...24V AC used with 700-HN123 socket	10	700-AV1R	✓
	Varistor with LED Surge Suppressor Used with 700-HN153 Socket Voltage Range: 110...240V AC used with 700-HN123 socket	10	700-AV3R	✓
	RC Surge Suppressor Voltage Range: 6...24V AC/DC used with 700-HN123 socket	10	700-AR1	✓
	RC Surge Suppressor Voltage Range: 110...240V AC/DC used with 700-HN123 socket	10	700-AR2	✓
 Cat. No. 700-AT2	ON-Delay Time Module Voltage Range: 12...24V AC/DC used with 700-HN104 socket <div style="text-align: right;">  </div>	1	700-AT1	available Oct. 02'
	One Shot Timing Module Voltage Range: 12...24V AC/DC used with 700-HN153 socket <div style="text-align: right;">  </div>	1	700-AT2	available Oct. 02'
 Cat. No. 700-HN123	Screw Terminal Socket – Panel or DIN Rail Mounting 8-pin miniature socket for use with 2-pole, Bulletin 700-HP relays. Incorporates coil and contact separation. Order must be for 10 sockets or multiples of 10.	10	700-HN123	✓
 Cat. No. 199-DR1	DIN Rail Mounting Pack Standard 35 x 7.5 mm DIN Rail, 1 meter long, 10 rails per package. Order must be for 10 rails or multiples of 10.	10	199-DR1	✓
	Plastic Retainer and Ejection Lever For use with the 700-HN123 Sockets Built-in ability to accept 1492 Snap-in Markers Order must be in multiples of 10	10	700-HN119	✓

Bulletin 700-HP Pin Style (PCB) Slim Line Relay, Socket, and Retainer Clip Reference Chart

Relay Type	Socket Cat. No.	Retainer Clip Cat. No.
700-HPX2	700-HN123	700-HN119
700-HP32	700-HN123	700-HN119

		Cat. No. 700-HP...		
Electrical Ratings				
Pilot Duty Rating ❷	C300, R300			
Rated Thermal Current (I_{th})	2-Pole — 8A			
Rated Insulation Voltage (U_i)	250V IEC, 300V UL/CSA			
Contacts	Inductive	2-Pole		Hp
	120V AC, 1-phase	▶ ◀	◀ ▶	1/6
	240V AC, 1-phase	15 A 7.5 A	1.5 A 0.75 A	1/3
	Make, Break, & Continuous V DC	30V, 8 A		
Min. Permissible Contact Ratings	700-HP32 = 300 mW (5V, 5 mA) 700-HPX = 50 mW (5V, 5 mA)			
Permissible Coil Voltage Variation	80...110% of Nominal Voltage at 50 Hz 80...110% of Nominal Voltage at 60 Hz 73...150% of Nominal Voltage at DC		Drop-out: 20% of Nominal Coil Voltage AC Voltage: 10% of Nominal Coil Voltage DC	
Sealed Power Consumption ±10%	Max. Allowable Leakage OFF 25% of VA❸			
AC Coils	1.2 VA 50 Hz 1.0 VA 60 Hz			
DC Coils	Max. Allowable Leakage of 10% of W 0.5 W			
Design Specification/Test Requirements				
Dielectric Withstand Voltage for One Minute	Pole to Pole (VRMS)	2000V AC		
	Contact to Coil (VRMS)	5000V AC		
Mechanical				
Degree of Protection	Open Type (Sockets)			
Mechanical Life Operations	10 x 10 ⁶ (AC Coils), 20 x 10 ⁶ (DC coils)			
Switching Frequency Operations	1800/hr.			
Coil Voltages	See Overview/Product Selection			
Operating Time at Nominal Voltage at 20°C (ms)	Pickup	15		
	Dropout	12		
Maximum Operating Rate	16 Ops/s			
Vibration	Enclosure	5 G		
	Fragility	2.5 G		
Shock	Endurance	50 G		
	Fragility	15 G		
Max. Socket Torque	0.5 Nm (4.4 lb. - in.)			
Environmental				
Temperature	Operating	-40...+85°C		
	Storage	-45...+100°C		
Altitude	2000 m (6560 ft)			
Construction				
Insulating Material	Molded High Dielectric Material			
Enclosure	Transparent Dust Cover			
Contact Material	Silver Nickel, (AgNi), Silver Nickel + Gold Plating (AgNi + Au)			
Terminal Markings on Socket	In accordance with EN50 0005			
Sockets	2-Pole			
	700-HN123			
Approvals				
Certifications	CSA Certified, File LR75088, UL Recognized, File E3125, Guide NLDX 2, UL Listed, with Allen-Bradley socket, CE Marked (per EU Low Voltage Directive 73/23 EEC 93/68 EEC)			
Standards	IEC 255-1-00, IEC 255-23, CSA 22.2, UL 508			

❶ Performance Data – See page Important-2, publication A113.

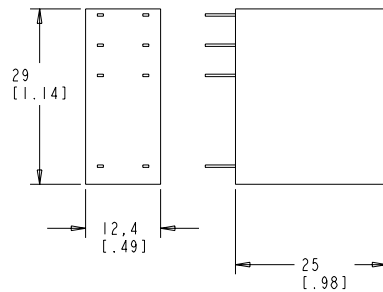
❷ NEMA Rating Chart is on page 19.

❸ The inrush VA equals 1.5 times the sealed VA.

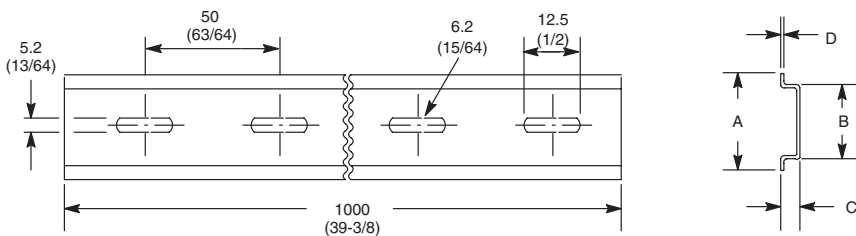
Bulletin 700-HP
Interposing/Isolation Relays

Approximate Dimensions

Approximate Dimensions are shown in millimeters (inches). Approximate Dimensions are not intended to be used for manufacturing purposes.

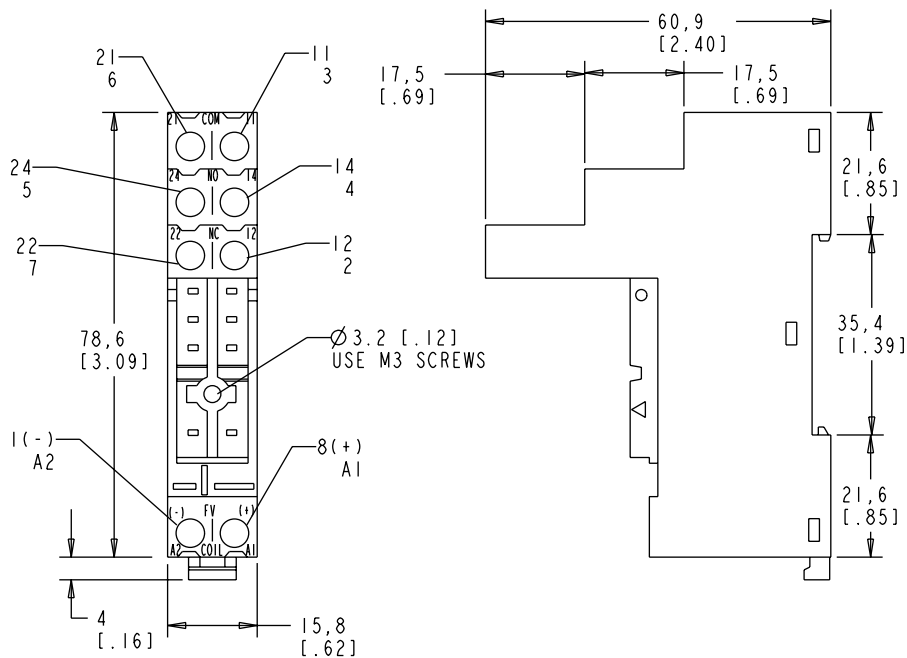


Bulletin 700-HP Relay



Cat. No. 199-DR1 DIN Mounting Rail Series B
 Cat. No. 199-DR4 DIN Mounting Rail Series B Has No Mounting Holes

Cat. No.	A	B	C	D	Approx. Shipping Wt.
199-DR1	35 (1-3/8)	27 (1-1/16)	7.5 (19/64)	1.02 (1/64)	1.85 kg (4.07 lbs.) (10/pkg)
199-DR4	35 (1-3/8)	27 (1-1/16)	15 (19/32)	2.3 (3/32)	3.68 kg (8 lbs.) (5/pkg)



Cat. No. 700-HN123

Single Wire: 0.2 mm².....2.5 mm² (#24 AWG.....14 AWG)
 Double Wire: 2 X 0.2 mm².....2 X 2.5 mm² (2 X 24 AWG.....#2 X 14 AWG)
 Wire Type: solid or stranded, copper only
 Strip Length: 7 mm (9/32 in.), Torque: 0.5Nm (4.4 lb-in.)