

# Double break

## → PBX Secure

- Conforming to standard DIN 41 636 type F
- Double break electrically-isolated changeover circuit (form Zb)
- IP 40 or IP 67 versions
- Operating temperature between -50 and +85°C
- Long overtravel
- Standard or Low level version
- Positive break mechanism according to IEC 60947-5-1



## Caractéristiques

	Standard 83240	Standard High force 83242	Low level 83241	Low level High force 83243
<b>Sealing</b>				
IP 40 *	W3			
IP 40 *	W3 + Lever only			
IP 40 *	W3 + Lever + Mounting plate with holes			
IP 40 *	W3 + Lever + Mounting plate with notches			
IP 40 *	W5			
IP 40 *	W5 + Lever only			
IP 40 *	W5 + Lever + Mounting plate with holes			
IP 40 *	W5 + Protective cover			
IP 67 *	W3			
IP 67 *	W3 90° + Lever only			
IP 67 *	W5			
IP 67	W3 + Lever only			
IP 67	W5 + Lever only			
IP 67	W5 + Lever only + Mounting plate with holes			
<b>Electrical characteristics</b>				
Rating nominal / 250 V <sub>a</sub> (A)	6	6	-	-
Rating nominal / 250 V <sub>C</sub> (A)	0.2 → 0.5	0.2 → 0.5	-	-
Rating Thermal (A)	10	10	-	-
Rating nominal / 4 → 30 V <sub>C</sub> (A)	-	-	0.01	0.01
<b>Mechanical characteristics</b>				
Maximum operating force (N)	4.5	6.5	4.5	6.5
Rest position max. (mm)	8.9	8.9	8.9	8.9
Operating position (mm)	6.6 ±0.25 **	6.6 ±0.25 **	6.6 ±0.25 **	6.6 ±0.25 **
Maximum positive opening position (mm)	4.4 **	4.4 **	4.4 **	4.4 **
End of travel position (mm)	3.4 max. **	3.4 max. **	3.4 max. **	3.4 max. **
Maximum differential travel (mm)	1 ±0.3	1 ±0.3	1 ±0.3	1 ±0.3
Operating temperature (°C)	-50 → +85	-50 → +85	-50 → +85	-50 → +85
Mechanical life (operations)	10 <sup>7</sup> ***	10 <sup>7</sup> ***	10 <sup>7</sup> ***	10 <sup>7</sup> ***
Contact gap (mm)	0.5 x 2	0.5 x 2	0.3 x 2	0.3 x 2
Tightening torque (Nm)	1.3 max.	1.3 max.	1.3 max.	1.3 max.
Weight (g)	22 **	22 **	22 **	22 **
<b>Comments</b>				

\* Both the W3 and W5 connectors are IP 00

\*\* Values given for versions without lever (in relation to the reference dimension X0 - See Dimensions section).

\*\*\* With front-end actuation and for IP 40 version.

5 x 10<sup>6</sup> guaranteed for IP 67 versions.

## Product adaptations

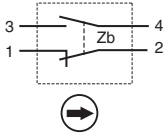


- Special protective cover
- Wire outputs, cable outputs
- Special levers and actuators
- Connections : connectors folded at an angle between 0 and 90°, special additional connectors
- UL, CSA, CCE and VDE certification on request

## Principles

### Function

Four-terminal double break two-way contact element (form Zb). The 2 moving contacts are electrically isolated from one another.



## Additional characteristics

### Components

#### Material

- Case/cover : 20% glass reinforced polycarbonate. Material classed as I2F1 according to standard NFF 16-101/102
- Contacts: AgNi for Standard version and AgPd for low level version
- Terminals: Tinned brass
- Button membrane: Silicon

### Conformity to standards

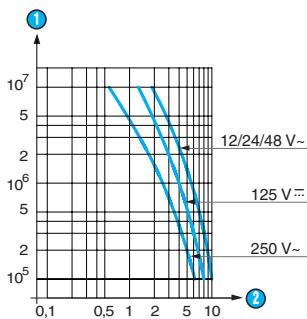
- Dimensions conforming to standard DIN 41 636 type F
- Insulation stress according to standard IEC 60947-5-1
  - \* Overvoltage category: III  $U_{imp} = 4 \text{ KV}$
  - \* Local voltage:  $U_i = 400 \text{ V}$
  - \* Degree of pollution = 3 for IP 40 versions and 1 for IP 67 versions
- Insulation stress according to standard EN 50124-1
  - \* Overvoltage category: OV3  $U_{imp} = 2.5 \text{ KV}$
  - \* Local voltage:  $U < 110 \text{ V}$
  - \* Degree of pollution = PD3A for IP 40 versions and PD2 for IP 67 versions

### Electrical protection

- Short-circuit protection device according to standard EN 60947-5-1, 6 AgG fuse

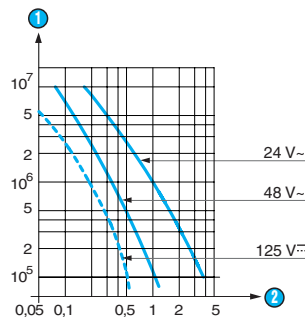
## Curves

### Operating curve for type AC15



- ① Number of operations
- ② Current in Amps

### Operating curve for type DC13

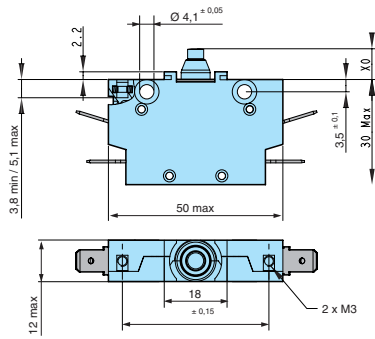


For IP 67 versions and operating curve at 125 V DC:  
Please consult Crouzet

## Dimensions (mm)

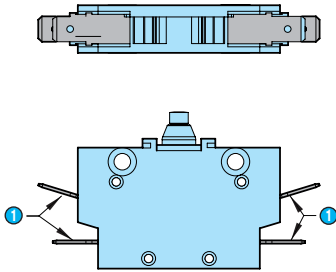
### → Product

83240 - 83241 - 83242 - 83243



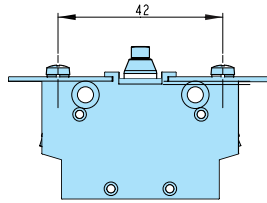
### → Connections

W3 for 6.35 mm clips

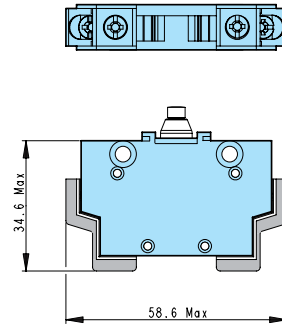


1 Connectors folded 90° are available on request

W5 with screw

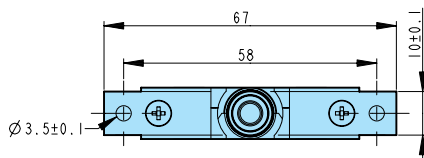


W5 with screw and protective cover

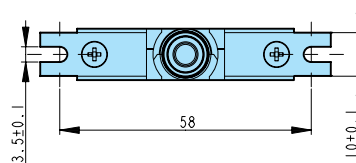


### → Mounting accessories

Plunger with plates with holes



Plunger with plates with notches



## → Actuators

### Roller lever

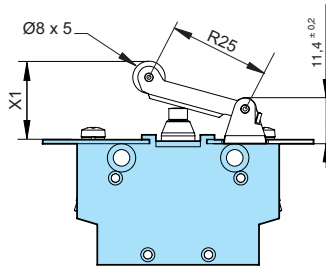


Table of positions for lever versions

Rest position max. (mm) relative to X1 reference	21
Operating position (mm)	16,6 <sup>±0,6</sup>
Maximum positive opening position (mm)	13,2
End of travel position (mm)	12
Maximum differential travel (mm)	1,8 <sup>±0,55</sup>

## Other information

### PRODUCT CODING TABLE 8324xxxx

#### 8324Xxxx (Contact/Force)

- 0: Standard/4,5 N
- 1: Low level/4.5 N
- 2: Standard/6.5 N High force
- 3: Low level/6.5 N High force

#### 8324xXxx (Seal)

- 0: IP 40
- 2: IP 67

#### 8324xxXx (Connection)

- 0: W3 connectors for 6.35 mm clips
- 1: W3 90B connectors folded 90° for 6.35 mm clips
- 2: W5 connectors with screw
- 3: W5 connectors with screw and protective cover
- 4: W5 connectors supplied without screws

#### 8324xxxX (Accessory)

- 0: Plunger
- 1: Plunger with plates with holes
- 2: Plunger with plates with notches
- 3: Roller lever (flush plate)
- 4: Roller lever with plates with holes
- 5: Roller lever with plates with notches

#### Example:

A PBX with Standard contact (AgNi), 6N force, IP 67 seal, W3 connectors and Roller lever accessory with plates with holes = **83242204**