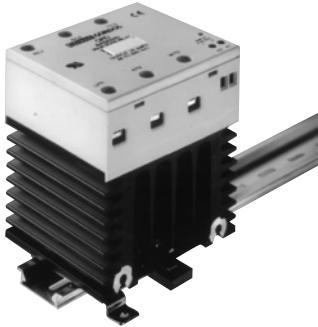


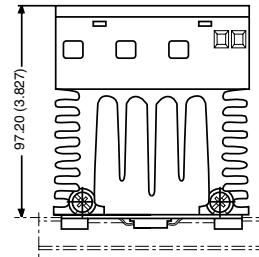
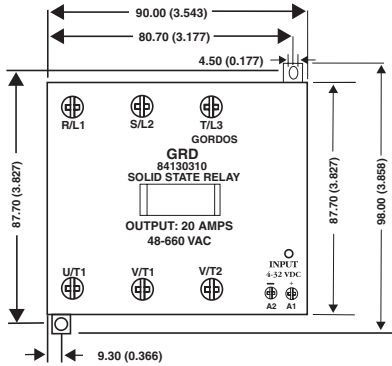
# SOLID STATE RELAYS

## 90mm 2 and 3 PHASE DIN-RAIL SSR

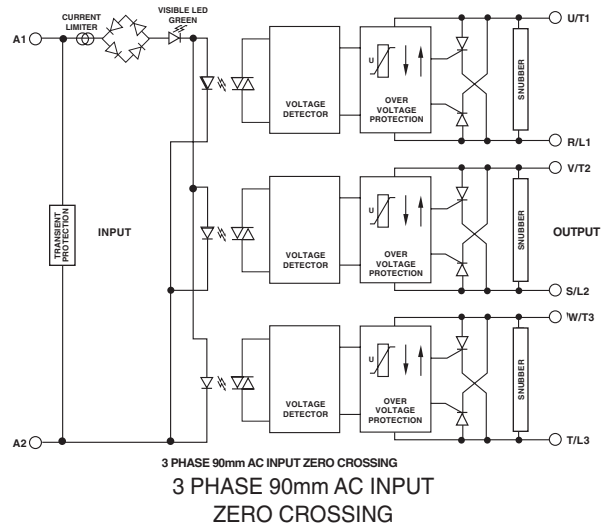
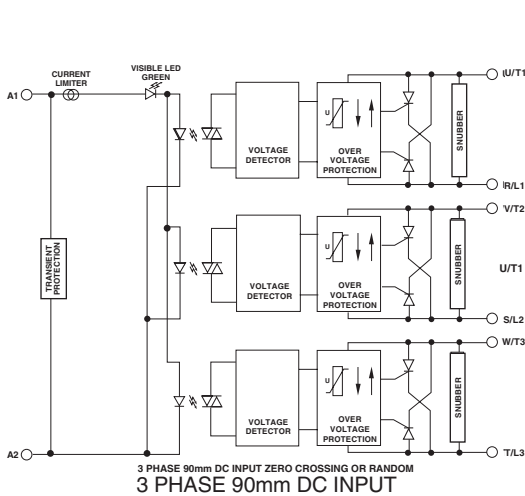


### FEATURES:

- DIN-Rail or panel mount.
- Compact Size.
- LED indicator.
- AC or DC control.
- Zero AC or random turn-on models.
- 4 kV optical isolation.
- UL, cUL Recognized (File E79183)
- CE Compliant Per EN60950



**DIMENSIONS:** inches (mm)  
**TOLERANCE:** ±0.20 (±0.008)



**NOTE:** V/T2 to S/L2 is shorted on 2 phase models.

Products and specifications subject to change without notice.  
 Consult factory for application assistance.

# SOLID STATE RELAYS

## 90mm 2 and 3 PHASE DIN-RAIL SSR

### INPUT SPECIFICATIONS:

Model Number	84130310	84130312	84130311	Units
<b>Parameter</b>	<b>84130220</b>	<b>84130221</b>	<b>84130222</b>	
Control Voltage	4-32 VDC	4-32 VDC	90-280 VAC	
Drop Out Voltage	1.0 VDC	1.0 VDC	10 VAC	
Maximum Input Current (1)	22	22	6	mA
Maximum Turn-On Time	8.33	0.1	20	ms
Maximum Turn-Off Time	8.33	8.33	30	ms
Type	Zero Crossing	Random Turn-on	Zero Crossing	

### OUTPUT SPECIFICATIONS:

Parameter	Three Phase	Two Phase	Units
	84130310 84130311 84130312	84130220 84130221 84130222	
Line Voltage	48-530	48-530	Vrms
Peak Off-State Voltage (2)	1200	1200	Vpeak
Maximum Off-State Leakage (3)	.25	.25	mArms
Static Off-State dv/dt (4)	500	500	V/μSec
Minimum On-State Current	100	100	mArms
Maximum On-State Current per phase (5)	20	25	Arms
Maximum 1-Cycle Surge (6)	750	750	Apeak
Maximum 1-Second Surge (7)	145	145	Apeak
Peak On-State Voltage Drop (8)	1.6	1.6	Vpeak
I <sup>2</sup> t (60 Hz, Half-Cycle)	1000	1000	A <sup>2</sup> sec

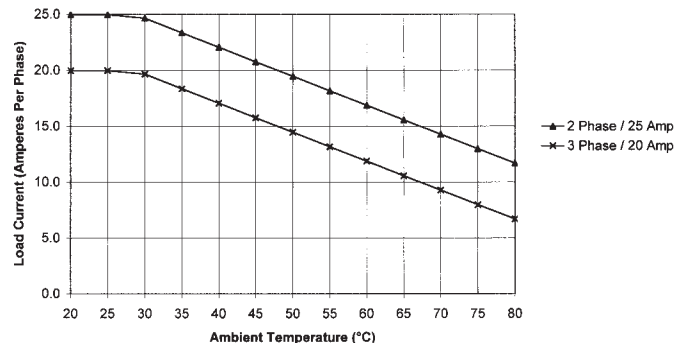
### GENERAL SPECIFICATIONS:

Parameter	All Devices
Operating Temperature Range	-20 to 80°C
Storage Temperature Range	-40 to 100°C
Input to Output Isolation Voltage (9)	4000 Vrms
Input/Output to ground Isolation Voltage (9)	2000 Vrms
Capacitance (Input to Output)	8 pF
Line Frequency Range	47 to 63 Hz

**Notes:**

- (1) At maximum input voltage. Input is regulated and current limited.
- (2) Do not apply continuously for over 1 minute.
- (3) At maximum line voltage, Ta = 25°C.
- (4) Minimum dv/dt per EIA/NARM R5443, method RS397, 25°C.
- (5) Mounted in vertical position on DIN-Rail. Free Air. Derated by 27.3 mA/°C to 80°C.
- (6) Non-repetitive 60 Hz, resistive load, Ta = 25°C.
- (7) Non-repetitive 50 or 60 Hz, resistive load, Ta = 25°C.
- (8) At maximum rated current.
- (9) Limited to 1 mA for 1 second, Ta = 25°C.

DERATING CURVES:  
90mm Din Rail SSR



Products and specifications subject to change without notice.  
Consult factory for application assistance.