

Coaxial Low Pass Filter

NON-CATALOG

BBLP-467+
BBLP-467

50Ω Flat Time Delay DC to 280 MHz

Maximum Ratings

Operating Temperature	-55°C to 100°C
Storage Temperature	-55°C to 100°C
RF Power Input	0.5W max.

Features

- flat group delay for low pulse distortion
- rugged shielded case
- other BBLP models available with wide selection of cut-off frequencies

Applications

- linear modulation techniques
- voice transmission applications
- digital communications



CASE STYLE: FF55

Connectors	Model	Price	Qty.
BNC	BBLP-467(+)	Contact Sales Dept.	

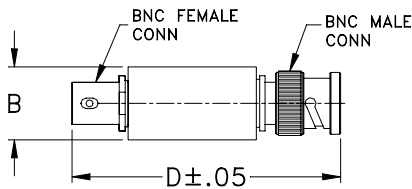
+ RoHS compliant in accordance with EU Directive (2002/95/EC)

The +Suffix identifies RoHS Compliance. See our web site for RoHS Compliance methodologies and qualifications.

Low Pass Filter Electrical Specifications

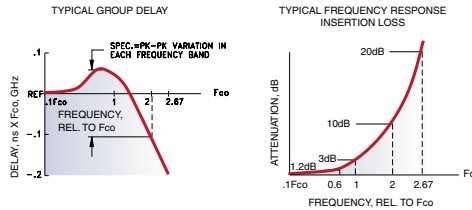
PASSBAND (MHz) (loss < 1.2 dB) Min.	fco, MHz Nom. (loss 3 dB)	STOPBAND (MHz)		VSWR (:1)		GROUP DELAY VARIATION (nsec)		
		(loss > 10 dB)	(loss > 20 dB)	DC-0.2fco	DC-0.6fco	DC-fco	DC-2fco	DC-2.67fco
DC-280	467	934-1246	1246	1.25:1	2.2:1	0.15	0.4	0.55

Outline Drawing

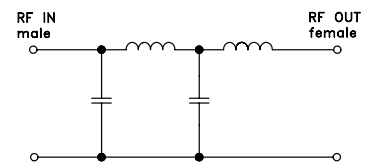


Outline Dimensions (inch/mm)

B	D	wt
.54	2.59	grams
13.72	65.79	40.0

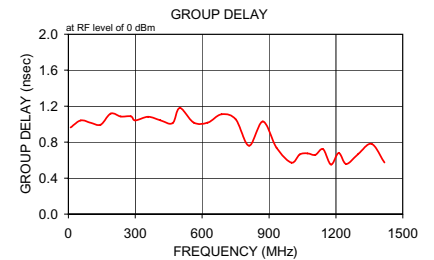
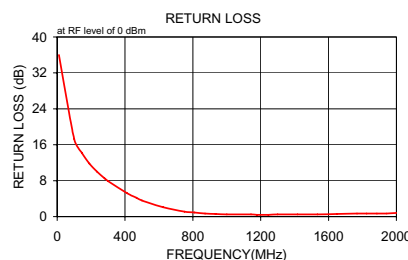
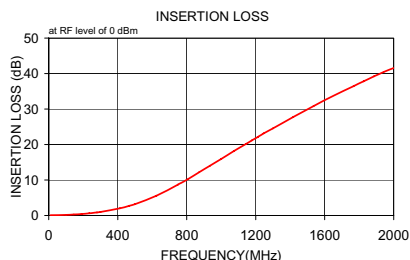


Electrical Schematic



Typical Performance Data

Frequency (MHz)	Insertion Loss (dB)	Return Loss (dB)	Frequency (MHz)	Group Delay (nsec)
10.0	0.07	0.1	10.0	0.963
100.0	0.18	0.1	55.0	1.041
145.0	0.28	0.1	100.0	1.016
190.0	0.42	0.1	145.0	0.994
235.0	0.61	0.1	190.0	1.118
280.0	0.85	0.1	235.0	1.085
300.0	0.98	0.1	280.0	1.088
412.0	2.01	0.1	300.0	1.042
467.0	2.72	0.1	357.5	1.083
500.0	3.19	0.2	412.5	1.043
625.0	5.57	0.2	467.0	1.010
750.0	8.71	0.3	500.0	1.180
810.0	10.34	0.4	562.5	1.017
872.0	12.19	0.4	625.0	1.017
934.0	14.02	0.5	687.5	1.110
1000.0	15.94	0.5	750.0	1.055
1072.5	18.12	0.6	810.0	0.762
1142.5	20.11	0.7	872.5	1.030
1177.5	21.14	0.7	934.0	0.736
1212.5	22.15	0.7	1000.0	0.572
1246.0	23.12	0.8	1037.5	0.863
1300.0	24.56	0.8	1072.5	0.675
1417.5	27.75	0.9	1107.5	0.659
1535.0	30.82	1.0	1142.5	0.722
1650.0	33.70	1.1	1177.5	0.551
1767.5	36.46	1.2	1212.5	0.679
1825.0	37.83	1.5	1246.0	0.558
1885.0	39.23	1.6	1300.0	0.668
1942.5	40.45	1.6	1360.0	0.781
2000.0	41.59	1.8	1417.5	0.573



P.O. Box 350166, Brooklyn, New York 11235-0003 (718) 934-4500 Fax (718) 332-4661 For detailed performance specs & shopping online see Mini-Circuits web site



The Design Engineers Search Engine Provides ACTUAL Data Instantly From MINI-CIRCUITS At: www.minicircuits.com

RF/IF MICROWAVE COMPONENTS

REV. A
M98898
BBLP-467
070509