

# High Pass Filter

## BHP-150+

50Ω 133 to 1000 MHz

### Maximum Ratings

Operating Temperature	-55°C to 100°C
Storage Temperature	-55°C to 100°C
RF Power Input	0.5W max.

Permanent damage may occur if any of these limits are exceeded.

### Features

- rugged shielded case
- other standard and custom BHP models available with wide selection of fco

### Applications

- lab use
- transmitters/receivers
- radio communications



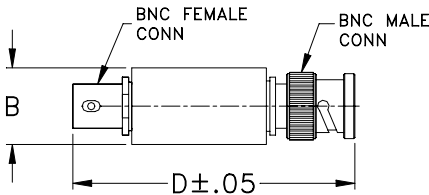
CASE STYLE: FF55			
Connectors	Model	Price	Qty.
BNC	BHP-150+	\$36.95 ea.	(1-9)

**+RoHS Compliant**  
The +Suffix identifies RoHS Compliance. See our web site for RoHS Compliance methodologies and qualifications

### High Pass Filter Electrical Specifications

STOPBAND (MHz)	fco (MHz) Nom.	PASSBAND (MHz)	VSWR (:1)	
(loss > 40 dB)	(loss > 20 dB)	(loss < 1 dB)	Stopband Typ.	Passband Typ.
DC-70	70-95	133-1000	17	1.8

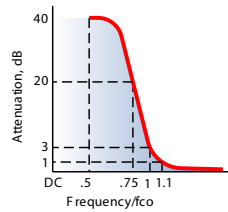
### Outline Drawing



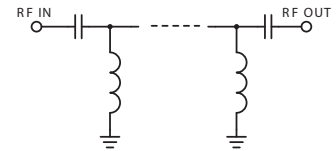
### Outline Dimensions (inch/mm)

B	D	wt
.54	2.59	grams
13.72	65.79	40.0

### typical frequency response

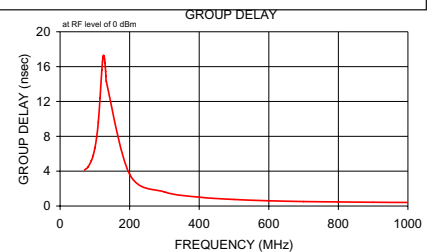
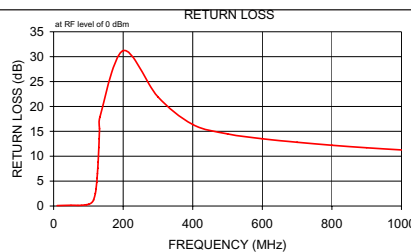
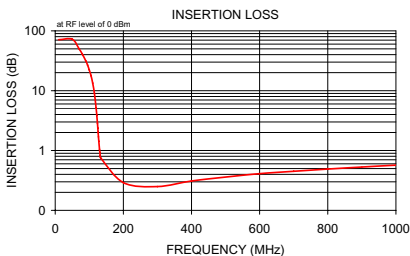


### electrical schematic



### Typical Performance Data

Frequency (MHz)	Insertion Loss (dB)	Return Loss (dB)	Frequency (MHz)	Group Delay (nsec)
	$\bar{x}$	$\sigma$		
10.00	71.12	2.99	70.00	4.13
50.00	72.50	1.13	80.00	4.46
70.00	50.20	0.59	90.00	5.24
80.00	40.39	0.58	95.00	5.80
90.00	31.22	0.67	100.00	6.67
95.00	26.73	0.74	105.00	7.91
100.00	22.30	0.81	110.00	9.63
105.00	17.87	0.89	115.00	12.43
110.00	13.42	0.97	120.00	15.59
115.00	9.04	1.02	122.00	16.58
120.00	5.14	0.91	123.00	16.93
122.00	3.87	0.80	124.00	17.17
124.00	2.81	0.65	125.00	17.28
125.00	2.37	0.57	126.00	17.26
126.00	2.00	0.49	127.00	17.11
127.00	1.69	0.41	128.00	16.84
128.00	1.43	0.33	129.00	16.45
130.00	1.05	0.21	130.00	15.98
131.00	0.93	0.15	131.00	15.45
132.00	0.82	0.11	132.00	14.88
133.00	0.76	0.07	133.00	14.29
200.00	0.29	0.02	200.00	3.64
300.00	0.25	0.02	300.00	1.62
400.00	0.31	0.02	400.00	1.02
500.00	0.36	0.01	500.00	0.75
600.00	0.41	0.01	600.00	0.60
700.00	0.45	0.01	700.00	0.51
800.00	0.49	0.01	800.00	0.47
900.00	0.53	0.00	900.00	0.43
1000.00	0.57	0.00	1000.00	0.41



### Notes

- Performance and quality attributes and conditions not expressly stated in this specification document are intended to be excluded and do not form a part of this specification document.
- Electrical specifications and performance data contained in this specification document are based on Mini-Circuit's applicable established test performance criteria and measurement instructions.
- The parts covered by this specification document are subject to Mini-Circuits standard limited warranty and terms and conditions (collectively, "Standard Terms"); Purchasers of this part are entitled to the rights and benefits contained therein. For a full statement of the Standard Terms and the exclusive rights and remedies thereunder, please visit Mini-Circuits' website at [www.minicircuits.com/MCLStore/terms.jsp](http://www.minicircuits.com/MCLStore/terms.jsp)

