

Coaxial High Pass Filter

BHP-500+

50Ω 500 to 3200 MHz

Maximum Ratings

Operating Temperature	-55°C to 100°C
Storage Temperature	-55°C to 100°C
RF Power Input	0.5W max.

Permanent damage may occur if any of these limits are exceeded.

Features

- rugged shielded case
- other standard and custom BHP models available with wide selection of fco

Applications

- lab use
- transmitters/receivers
- radio communications



CASE STYLE: FF55

Connectors	Model	Price	Qty.
BNC	BHP-500+	\$36.95 ea.	(1-9)

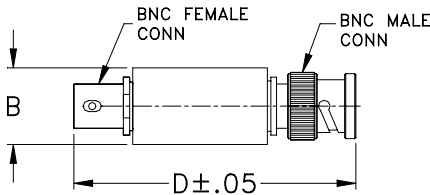
+RoHS Compliant

The +Suffix identifies RoHS Compliance. See our web site for RoHS Compliance methodologies and qualifications

High Pass Filter Electrical Specifications

STOPBAND (MHz)		fco (MHz) Nom.	PASSBAND (MHz)	VSWR (:1)	
(loss > 40 dB)	(loss > 20 dB)	(loss 3 dB)	(loss < 1 dB)	Stopband Typ.	Passband Typ.
DC-280	280-365	454	500-3200	17	1.9

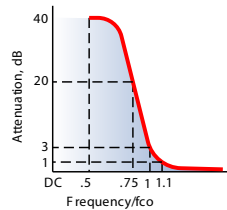
Outline Drawing



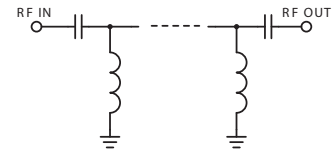
Outline Dimensions (inch/mm)

B	D	wt
.54	2.59	grams
13.72	65.79	40.0

typical frequency response

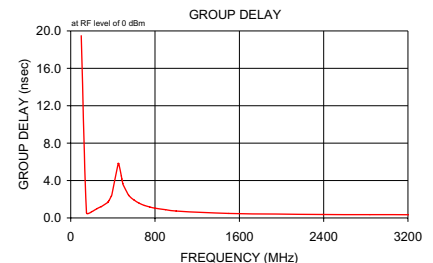
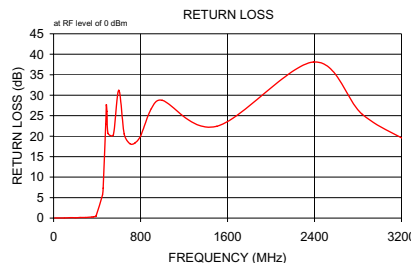
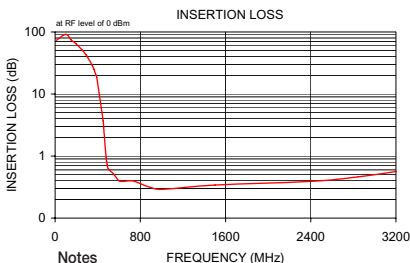


electrical schematic



Typical Performance Data

Frequency (MHz)	Insertion Loss (dB)		Return Loss (dB)	Frequency (MHz)	Group Delay (nsec)
	\bar{x}	σ			
10.00	73.03	4.97	0.04	100.00	19.48
100.00	91.45	6.05	0.05	150.00	0.55
150.00	74.69	0.45	0.11	200.00	0.67
200.00	63.66	0.50	0.07	250.00	0.99
250.00	52.21	0.65	0.13	290.00	1.21
290.00	42.87	0.80	0.14	297.00	1.26
297.00	41.24	0.83	0.14	350.00	1.66
350.00	28.65	1.12	0.25	355.00	1.72
355.00	27.43	1.15	0.26	365.00	1.88
365.00	24.98	1.21	0.29	385.00	2.33
385.00	19.93	1.36	0.39	390.00	2.49
390.00	18.64	1.40	0.44	451.00	5.83
451.00	3.67	1.22	5.67	456.00	5.80
456.00	2.88	1.04	7.30	480.00	4.48
480.00	0.93	0.26	22.88	485.00	4.18
485.00	0.80	0.17	27.62	490.00	3.92
490.00	0.71	0.11	26.06	495.00	3.68
500.00	0.62	0.04	20.70	500.00	3.48
550.00	0.51	0.02	20.30	550.00	2.43
600.00	0.40	0.01	31.22	600.00	1.92
650.00	0.39	0.00	20.55	650.00	1.57
700.00	0.40	0.01	18.20	700.00	1.33
750.00	0.39	0.01	18.39	750.00	1.17
800.00	0.36	0.01	20.02	800.00	1.05
900.00	0.31	0.01	26.73	900.00	0.88
1000.00	0.29	0.01	28.75	1000.00	0.74
1500.00	0.34	0.00	22.42	1500.00	0.48
2390.00	0.39	0.01	38.09	2390.00	0.37
2840.00	0.46	0.01	25.35	2840.00	0.35
3280.00	0.59	0.01	18.45	3280.00	0.33



Notes
 A. Performance and quality attributes and conditions not expressly stated in this specification document are intended to be excluded and do not form a part of this specification document.
 B. Electrical specifications and performance data contained in this specification document are based on Mini-Circuit's applicable established test performance criteria and measurement instructions.
 C. The parts covered by this specification document are subject to Mini-Circuit's standard limited warranty and terms and conditions (collectively, "Standard Terms"); Purchasers of this part are entitled to the rights and benefits contained therein. For a full statement of the Standard Terms and the exclusive rights and remedies thereunder, please visit Mini-Circuit's website at www.minicircuits.com/MCLStore/terms.jsp

